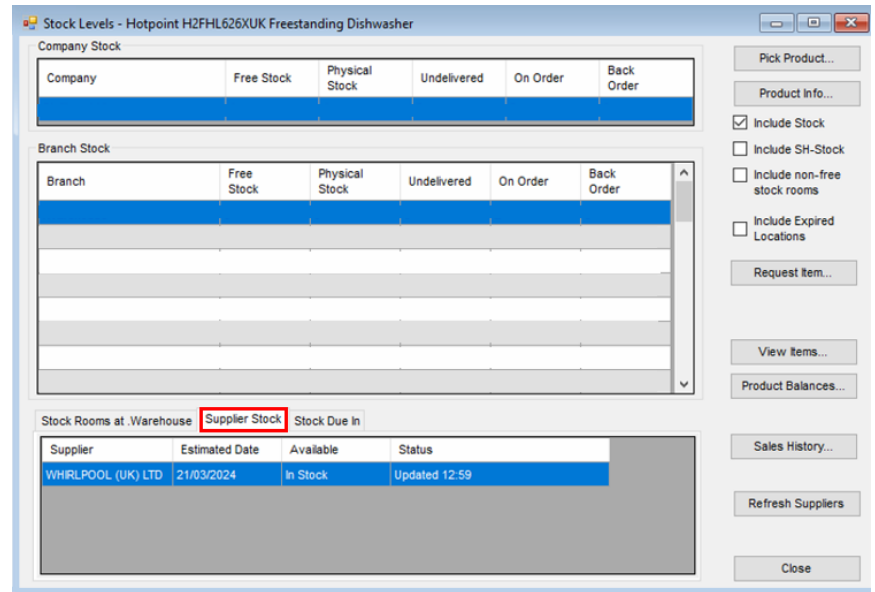


Tradeplace Integration

The Tradeplace module allows you to create orders on Tradeplace via NCompass, easily check product cost prices and provide product availability data both in-store and online.

Key Features Include:

- Allows you to easily check the cost price of an item straight from the Supplier.
- Tradeplace integration allows you to quickly check stock levels of an item with a supplier enhancing time efficiency.
- You can raise a Purchase Order and send it straight to the Supplier, removing the need to print it out from NCompass and then create it again manually somewhere else.



How does this work with my website?

Tradeplace Integration also integrates with your website by updating the stock level of items listed on your website allowing you to match products to their portal. This will update both cost prices and stock from the suppliers and allowing you to push purchase orders on the Tradeplace portal.

Suppliers we currently integrate with:

- | | |
|----------------|------------|
| • Bosch | • Hotpoint |
| • Electrolux | • Neff |
| • Hoover Candy | • Siemens |
| • Whirlpool | • Indesit |
| • Miele UK | |

Tradeplace PIM:

By integrating Tradeplace PIMS, you can save valuable time sourcing product specifications and images. This integration provides you with direct access to this data, freeing you up to focus on your day-to-day operations. You have the flexibility to dynamically control which Tradeplace features your display.



CHOOSE SUPPLIER

Please follow the next steps in order to configure your Data Export profile. Whilst configuring your export you can go back to a previous step at any time.

Select a Supplier and a corresponding Customer Code from the list below. Exported Data Catalogues support only one Supplier at a time.

If you haven't yet requested and activated your Customer Code for a Supplier you can do so in the module "Request for Activation".

Supplier: Customer Code:

Suppliers listed: BOSCH GB, Gaggeneau GB, NEFF GB, SIEMENS GB, ELECTROLUX GB, Miele GB, WHIRLPOOL GB

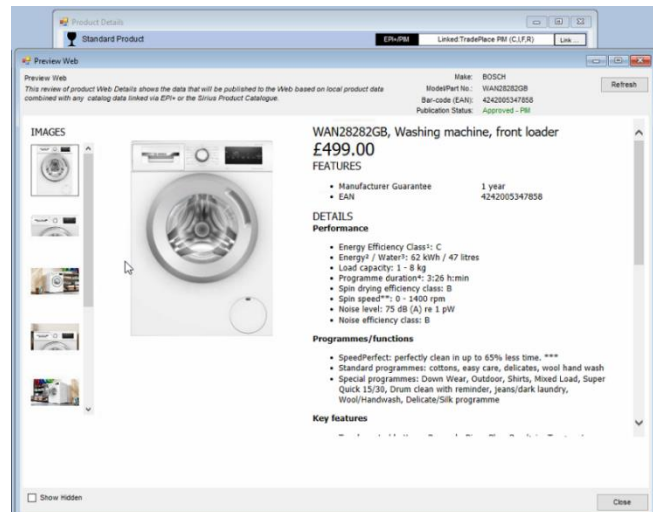
Buttons: Cancel, Next

Progress: 01 Choose Supplier, 02 Data Format, 03 Data Selection, 04 Sending Options, 05 Confirm Summary

With Tradeplace PIMS, the process is streamlined: when a new product is created in NCompass, the PIM system automatically scans for matches. Once identified, these products are effortlessly listed on your website, ready for immediate sale, enabling you to get products to market faster.

Suppliers we currently integrate with:

- Bosch
- Neff
- Siemens
- Electrolux
- Whirlpool



Place your order today!

Please email sales@findesolutions.com or call 0845 125 9192 for further information or to place your order.

You will then be sent an order form which will require you to specify the suppliers you wish to be set up with. Other suppliers may be requested at any time with no extra charge.

| Setup | Monthly | Item |
|-------|---------|----------------|
| £150 | £10 | Tradeplace |
| £150 | £10 | Tradeplace PIM |